



Performance by Design

Product Catalogue



64-Bit ▼



AX 2500
8 x 1 Gb Copper ports and
4 x 1 Gb SFP ports.



AX 2600-GC*
24 x 1 Gb Copper ports.



AX 3000-GC**
16 x 1 Gb Copper ports and
4 x 10 Gb SFP+ ports.



AX 5100
4 x 1 Gb SFP ports and
8 x 10 Gb XFP ports.



AX 5200
4 x 1 Gb SFP ports and
16 x 10 Gb XFP ports.

* Includes 2 other models:
AX 2600-GF: 24 x 1 Gb SFP ports.
AX 2600-GCF: 16 x 1 Gb Copper ports
and 8 x 1 Gb SFP ports.

** Includes 1 other model:
AX 3000-GCF: 8 x 1 Gb Copper ports,
8 x 1 Gb SFP ports, and
4 x 10 Gb SFP+ ports.

32-Bit ▼



AX 1000
6 x 1 Gb Copper ports and
2 x 1 Gb SFP ports.



AX 2000
8 x 1 Gb Copper ports and
2 x 1 Gb SFP ports.



AX 2100
8 x 1 Gb Copper ports and
4 x 1 Gb SFP ports.



AX 2200
16 x 1 Gb Copper ports and
4 x 1 Gb SFP ports.



AX 3100
16 x 1 Gb Copper ports
4 x 1 Gb SFP ports
and 2 x 10 Gb XFP ports.



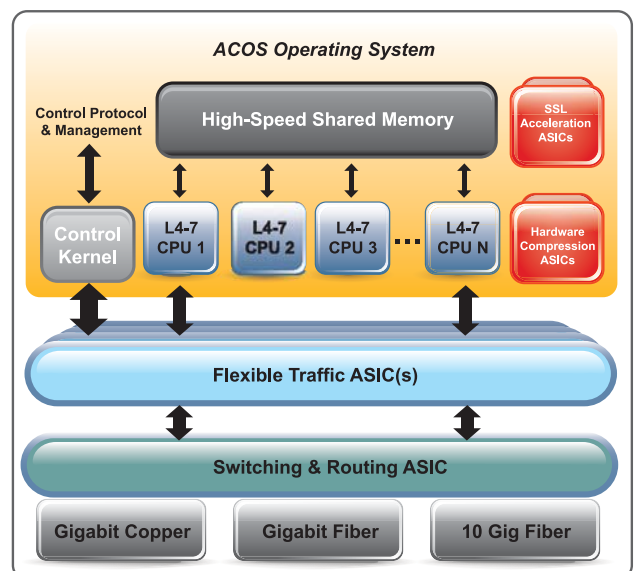
AX 3200
16 x 1 Gb Copper ports
4 x 1 Gb SFP ports
and 2 x 10 Gb XFP ports.

AX Series - New-generation Server Load Balancer

Advanced Core Operating System (ACOS)

Evenly distributes packets to the system's high-performance CPUs, Flexible Traffic ASIC, SSL acceleration module, and high-speed memory to eliminate the performance bottlenecks caused by one or more overloaded processors that commonly plague other solutions. With ACOS, network administrators can now prevent network traffic bottlenecks before they occur.

Awards



AX Series

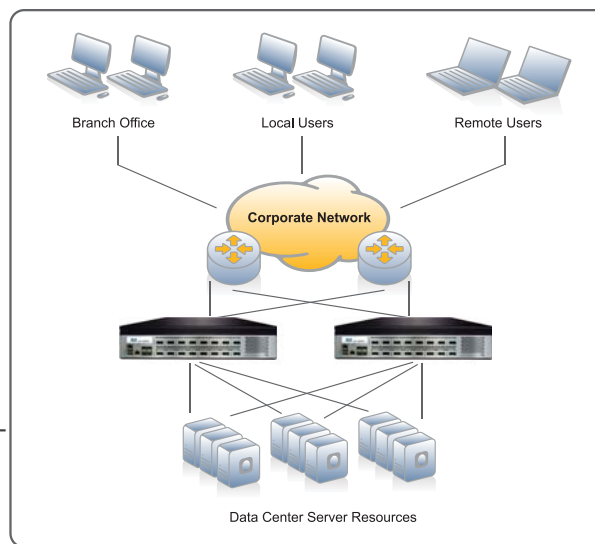
Twice the Performance at Half the Price

In independent third party tests by The Tolly Group, the AX Series is confirmed to deliver twice the performance at half the price of the market leader. Continuing a winning streak, the AX Series won Grand/Prix Best of Interop Tokyo for three consecutive years. AX also won Best of Interop Las Vegas 2007 and Server Load Balancer of the Year 2007 in China Computer World.

Shift Your Applications Into High Gear

The AX Series – Advanced Traffic Manager *New-generation Server Load Balancer*

A10 Networks' AX Series is the industry's best price/performance advanced traffic manager – helping all-size enterprises and ISPs maximize application availability through a high-performance and scalable application delivery platform. AX's revolutionary Advanced Core Operating System (ACOS) architecture allows it to linearly scale performance, spreading the traffic management work across all available CPUs and their cores, and farming out specialized work such as SSL and traffic distribution to ASICs and FPGAs. The end-result is a switch with uncompromised performance even when all features are turned on, which helps organizations reduce the power, server and rack space requirements in their datacenter.



AX Series

Maximize application availability, scalability & performance

Increase infrastructure efficiency

Deliver faster end user experience

AX Series Key Benefits

The AX Series' aFleX advanced scripting technology provides policy creation tools to deliver rich traffic inspection and switching capabilities, helping organizations adapt to constantly evolving networks and applications, and future proof their investment. AX's ACOS architecture has garnered numerous prestigious awards in recognition of A10's innovations, including native support for multi-CPU, multi-core systems. Plus, all features are included in the standard list price.

Key Features

- Revolutionary Advanced Core Operating System (ACOS)
 - Leverages modern architectures
 - Tuned for multiple CPUs with multiple cores
- Industry's best SSL and Layer 4-7 price/performance – never sacrifice features for performance
- aFleX scripting language for flexible traffic management
- aXAPI: REST-style XML API
- Supports IPv4 and IPv6
- Carrier-grade hardware components
- Advanced Network Address Translation (NAT) options
- Increases transactions per watt and reduces power requirements

ID Series



IDSentrie 1000
Supports up to 10,000 Users and 1,000 Devices
Includes 4 x 1 Gb Copper ports
and a 160 GB hard drive.

ID Series - Network Identity Management Appliances

The ID Series – Network Identity Management

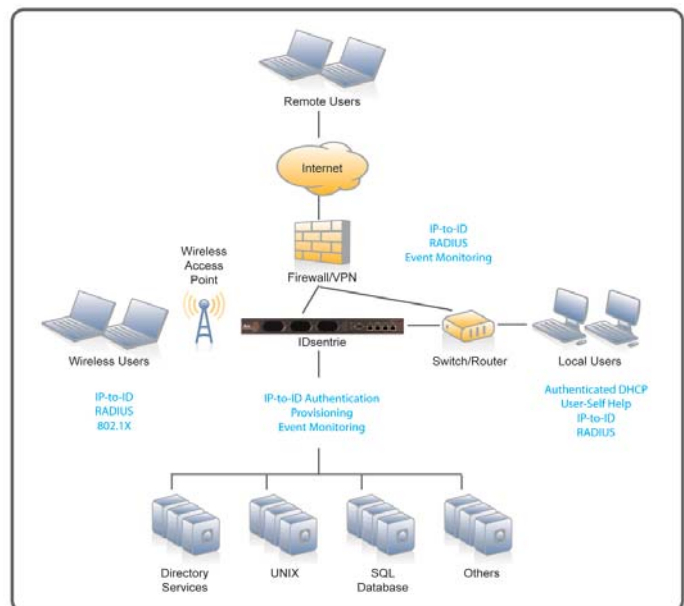
A10 Networks' ID Series includes the IDSentrie network identity management appliances and IDAccess authentication and guest access appliances.

IDSentrie – Network Identity Management Appliances

IDSentrie is the industry's only network identity management appliance with instant user identity resolution (IP-to-ID). It solves challenges caused by disparate data stores, unsynchronized identity resources, untimely provisioning, account and password issues, unsanctioned network access, and poor user visibility. IDSentrie is built on a flexible, virtual directory model for rapid integration with existing network infrastructure.

Key Benefits

- Simplifies password and account management with User Self-Help Services
- Reduces help desk calls and improves user productivity
- Provisions guest accounts
- Provides instant user identity resolution for any IP or MAC address (IP-to-ID)
- Enhances network authentication and control



Save Hours While Resolving Security Issues



The IP-to-ID Service was named a "Top Ten Product for the Next-generation Data-center" by NetworkWorld magazine – and IDSentrie won Best of Interop Tokyo 2006 in the "Network Management" category.



IDaccess 500

Supports up to 3,000 Users and 100 Devices

Includes 4 x 1 Gb Copper ports and a 160 GB (IDE) hard drive.



IDaccess 800

Supports up to 10,000 Users and 300 Devices

Includes 4 x 1 Gb Copper ports and a 160 GB (SATA) hard drive.

IDaccess – Network Authentication and Guest Access Appliance

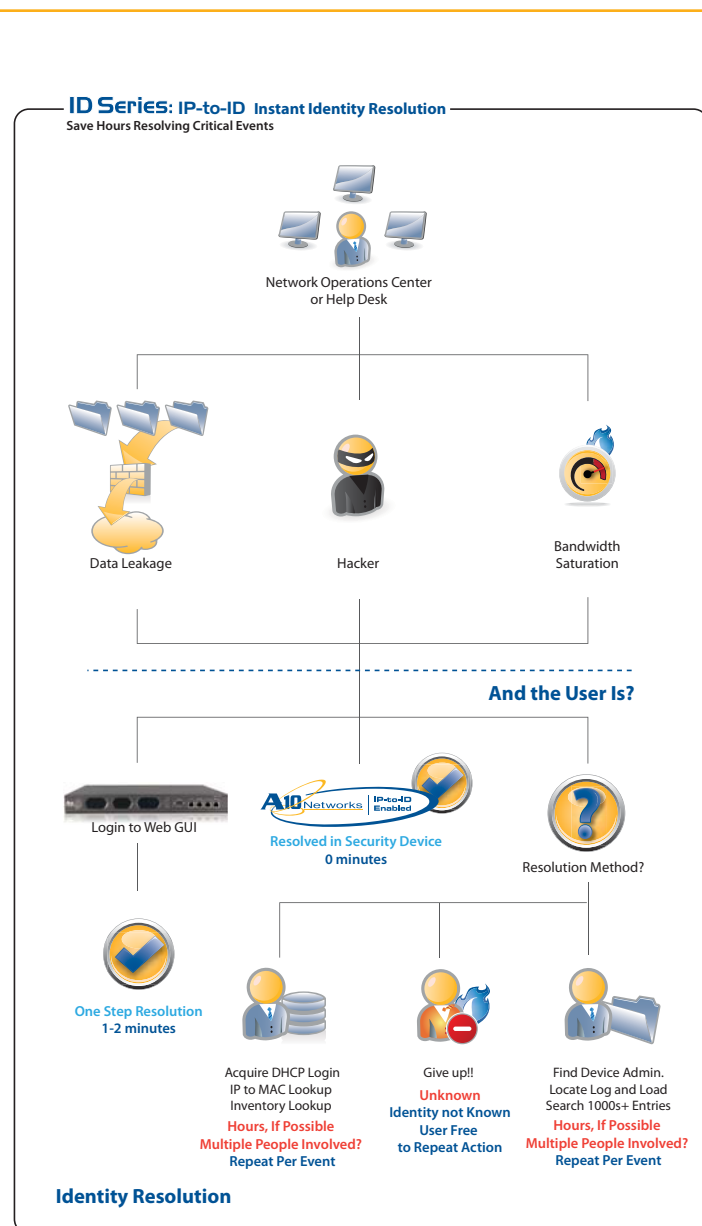
IDaccess, based on the IDsentrie platform, integrates RADIUS, DHCP, Guest Access and A10's unique IP-to-ID Service. The IDaccess appliances support comprehensive authentication methods and a wide-array of back end servers. By combining authenticated DHCP with a guest access portal, network administrators are empowered with a powerful and flexible network management tool to support all network and guest authentication needs.

Key Benefits

- Centralizes authentication for both guests and employees
- Ensures guests can access only the resources they need
- Eases burden on IT administrators with a single solution for both internal and guest users
- Leverages existing infrastructure without costly and complex upgrades
- Easy to use guest management portal

IP-to-ID Service

The Internet Protocol to Identity (IP-to-ID) Service, included in the IDsentrie and IDaccess appliances, is the industry's first technology that can resolve any IP or MAC address to a user identity instantly. With the award winning IP-to-ID Service, organizations can isolate and fix network and security issues much faster – and improve compliance reporting.





EX 1100: SME/Enterprise

Single CPU, 1 GB memory, 4 x 1 Gb Copper ports and a single 160 GB hard drive.



EX 2110: Enterprise/ISP

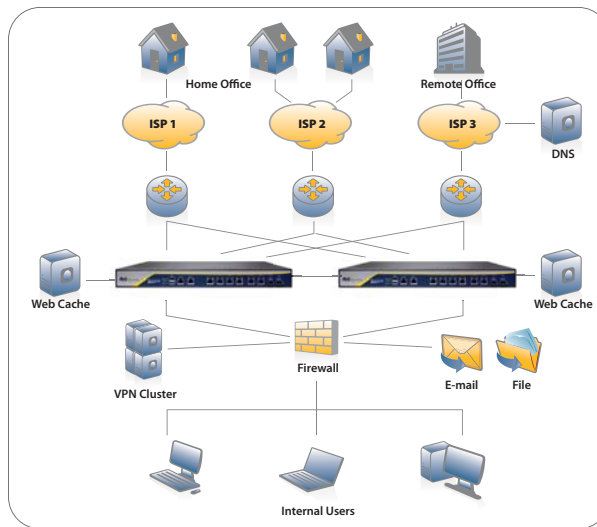
Single CPU, 2 GB memory, 6 x 1 Gb Copper ports, 2 x 1 Gb SFP ports and a single 160 GB hard drive.

EX Series - Bandwidth Management Appliance with Identity

Manage Bandwidth With Unprecedented Visibility

The EX Series – Bandwidth Management with User Identity

A10 Networks' EX Series is the industry's only bandwidth management appliance with identity-based application visibility. It solves network challenges caused by limited bandwidth at the network edge, poor application performance, increased Internet and WAN activity, poor application and user visibility, and tough security and compliance mandates. With the EX Series, organizations can cost effectively maximize Internet and WAN performance, simplify network management, and gain unprecedented application and user visibility.



EX Series

- Bandwidth Management
- Instant Application & User Visibility
- Link Load Balancing

EX Series Key Features

To manage today's networks effectively, WAN visibility is essential to know "who" is doing "what" and "when" so that bandwidth provisions can be made for necessary applications. The EX Series provides identity and application-based bandwidth reporting capabilities with a wealth of edge acceleration technologies to eliminate bandwidth chokepoints, minimize single points of failure, and scale WAN and Internet connections.

EX Series

Key Features

- Manage bandwidth and network links with application and user visibility
- Application identification
- Improves Internet response times
- Reduces bandwidth requirements
- Consolidates WAN and Internet bandwidth management
- Simplifies prioritization of business and non-business applications

Integration with ID Series' IP-to-ID Service for Instant User Identity Resolution

Combined with the award-winning IP-to-ID Service within A10's ID Series of network identity management appliances, the EX can generate identity-based reports to provide instant user identification for all traffic types. Without IDSentry, the EX can natively track user identification for the most popular file transfer, email and instant messaging protocols, and provide reports on Internet use for over 100 applications.

Type	Date/Time	User Name	App User Name	Source IP	Destination IP
yim/logoff	Oct 27 17:13:32	cparker	yardbird829	192.168.43.161	216.155.193.141
yim/logon	Oct 27 17:13:29	mtyner	bones1211	192.168.43.180	216.155.193.142
yim/logoff	Oct 27 14:01:40	srollins	sonny0907	192.168.43.165	216.155.193.174
yim/logon	Oct 27 13:59:07	srollins	sonny0907	192.168.43.165	216.155.193.174
msnim/logoff	Oct 27 10:01:26	dcherry	donc_msn1936	192.168.43.181	192.168.230.81
yim/logon	Oct 27 10:01:13	dcherry	donc_yim1936	192.168.43.181	216.155.193.181
yim/logoff	Oct 27 09:27:10	cparker	yardbird829	192.168.43.161	216.155.193.141
aim/logon	Oct 27 09:04:57	gevans	arranger1912	192.168.43.151	205.188.179.233
yim/logoff	Oct 27 08:48:09	tmonk	mrrmonk	192.168.43.174	216.155.193.149
yim/logon	Oct 27 08:44:42	tmonk	mrrmonk	192.168.43.174	216.155.193.149
yim/logoff	Oct 27 01:35:19	doshiba	doshiba	192.168.43.111	216.155.193.185

AX Series:

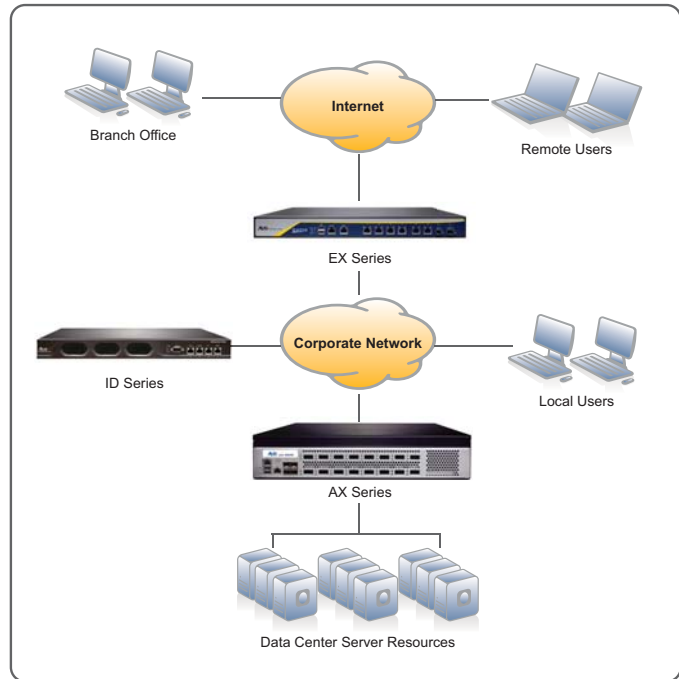
Advanced Traffic Management/
New-generation Server Load Balancer

EX Series:

Bandwidth Management with Identity

ID Series:

Network Identity Management



To learn more about the AX Series, EX Series, ID Series or A10 Networks, visit A10 Networks' Web site at: www.a10networks.com or call and talk to an A10 sales representative:

Corporate Headquarters
A10 Networks, Inc.
2309 Bering Drive
San Jose, CA 95131
Tel: +1 408 325-8668
Fax: +1 408 325-8666

North America Sales:
+1 888 A10-6363
+1 408 325-8616
sales@a10networks.com

Europe, Middle East and Africa Office:
+31 70 799 9143
emea_sales@a10networks.com

Asia Pacific Sales:

China, Beijing Office:
+86 10 85150698
china_sales@a10networks.com

China, Shanghai Office:
+86 21 6137-7850
china_sales@a10networks.com

Japan Office:
+81-3-3291-0091
jinfo@a10networks.com

Korea Office:
+82-2-6007-2150
+82-2-6007-2151
korea@a10networks.com

Taiwan Office:
+886-2-2657-3198
taiwan@a10networks.com